



Published by the City of Urayasu
1-1-1 Nekozone, Urayasu-shi,
Chiba 279-8501
☎047-351-1111
<http://www.city.urayasu.lg.jp>

City
News



Population and No. of
Households in Urayasu

Population: 170,302
Male: 83,173
Female: 87,165
Households: 82,212
Foreign Residents: 3,946
(As of October 30, 2020)

Garbage Collection Schedule during the New Year's Holidays



The year is coming to a close. Please take note of the garbage collection schedule during the New Year's holidays

Category \ Area		Nekozone, Kitazakae, Todaijima		Kairaku, Mihama, Irifune, Hinode, Akemi		Horie, Higashino, Fujimi, Maihama, Tekkadori 3-chome		Tomioka, Imagawa, Benten, Takasu, Minato, Tekkadori 1- and 2-chome, Chidori	
		December (last collection date)	January (first collection date)	December (last collection date)	January (first collection date)	December (last collection date)	January (first collection date)	December (last collection date)	January (first collection date)
Combustible garbage		30 (Wed.)	4 (Mon.)	30 (Wed.)	4 (Mon.)	29 (Tue.)	5 (Tue.)	29 (Tue.)	5 (Tue.)
Noncombustible garbage, hazardous garbage		15 (Tue.)	5 (Tue.)	17 (Thu.)	7 (Thu.)	16 (Wed.)	6 (Wed.)	18 (Fri.)	8 (Fri.)
Bottles, cans, and plastic PET bottles		29 (Tue.)	5 (Tue.)	24 (Thu.)	7 (Thu.)	30 (Wed.)	6 (Wed.)	25 (Fri.)	8 (Fri.)
Newspapers, magazines, cardboard boxes		28 (Mon.)	4 (Mon.)	28 (Mon.)	4 (Mon.)	26 (Sat.)	9 (Sat.)	26 (Sat.)	9 (Sat.)

Please Note

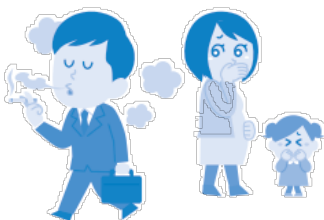
- From December 31 (Thu.) to January 3, 2021 (Sun.), all garbage collection services and garbage reception at the Clean Center will be closed.
- Collection dates for non-combustible garbage and hazardous garbage in the following areas during the month of January are listed below:
 - Nekozone, Kitazakae, Todaijima: January 5 (Tue.) and 19 (Tue.)
 - Kairaku, Mihama, Irifune, Hinode, Akemi: January 7 (Thu.) and 21 (Thu.)
 - Horie, Higashino, Fujimi, Maihama, Tekkadori 3-chome: January 6 (Wed.) and 20 (Wed.)
 - Tomioka, Imagawa, Benten, Takasu, Minato, Tekkadori 1- and 2-chome, Chidori: January 8 (Fri.) and 15 (Fri.)
- Please make sure to throw out your garbage by 8 a.m. If garbage is thrown out after the collection date, it will not be collected. In addition, due to the increase in the amount of disposal during the New Year's holidays, the collection time may differ from usual.

Inquiries: Garbage-Free Section (for inquiries about garbage separation and collection) **Tel:** 712-6467
Clean Center (for inquiries about bring-in garbage and applying for bulky trash collection) **Tel:** 381-5300

Let's Stop! Unwanted Secondhand Smoke

Starting April, in principle, smoking is prohibited indoors, such as in restaurants and workplaces.

- ✗ Do not smoke indoors (including outdoors for some facilities) except in designated smoking areas with signs.
- ✗ Select a place to smoke by referring to the signs and prevent unwanted secondhand smoke.
- ✗ Those under the age of 20 should not enter smoking areas.
- ✗ Even when smoking outdoors or at home, you must be considerate of your surroundings.



Inquiries: Health Promotion Section
Tel: 381- 9059

Precautions Attending Festivals and Events



If you participate in any events, go out to eat, etc., take appropriate infection prevention measures by keeping a safe distance from others, disinfecting your hands, wearing a mask, and refraining from speaking in a loud voice.

Refrain from late night drinking in crowded streets and restaurants or participating in similar events as much as possible.

Inquiries: Local Activities Promotion Section **Tel:** 712-6247

How to Apply and Enroll for Child-Rearing Clubs Starting from April of FY2021

We provide care and a home-like environment for children after school. This service is available for elementary school students living in Urayasu City whose guardians cannot be home during the day due to work.



Distribution of application forms

Application forms are distributed at the Youth Services Section (Urayasu City Hall 2F), Child-Rearing Clubs, or you can download it from the Urayasu City website. It is also available at City Service Centers until January 8, 2021 (Fri.)

When and where to submit your application

Date: December 1 (Sun.) through 25 (Wed.) (Closed on Saturdays and national holidays)

What to submit: Application form and documents certifying that childcare cannot be provided at home. (Certificate of employment, medical certificate, etc.)

Where to submit: Please go directly to the Youth Services Section;

Note: If you are unable to submit the application in person, please send it by December 25 (Wed.) (must be postmarked by this date) by designated recordings' mail or by simple registered mail to the Youth Services Section, Urayasu City Hall (postal code: 279-8501).

Please note

We will accept applications submitted after the above-mentioned deadline, but the priority will be given to those who apply within the period. In addition, please apply early, as the application may exceed the club capacity.

Inquiries: Youth Services Section, **Tel:** 712-6453

Are You Forgetting to Vaccinate?

Urayasu City has implemented measures to extend the vaccination period for those who have not yet been able to receive their regular vaccinations during the period set by the government, due to the spread of novel coronavirus infection. If you have not been vaccinated yet, please do so as soon as possible.

Extended period: Up to March 31, 2021

Location: City specified medical institutions

- Measles-rubella (MR) stage 2 vaccination
[Eligibility] ▶ Residents born between April 2, 2013, and April 1, 2015
- Japanese encephalitis stage 2 vaccination
[Eligibility] ▶ Residents born between March 20 and September 1, 2007
▶ 4th to 6th-grade elementary school students and 1st-grade junior high school students under the age of 13
- Two mixed (DT) (diphtheria / tetanus) vaccination
[Eligibility] ▶ Residents born between March 20 and September 1, 2007
▶ 6th-grade elementary school students and 1st-grade junior high school students under the age of 13



Regarding the Japanese encephalitis vaccination, the Vaccination Law Enforcement Ordinance has been revised, adding two of the benefits below:

- (1) Those under the age of 20, born by April 1, 2007, who still have not yet received all 4 vaccinations, may receive the remaining vaccinations at public expense (free of charge).
- (2) Those who were born between April 2, 2007, and October 1, 2009, who still have not received the first vaccination, may receive the vaccination (free of charge) during the second term (9 to 13 years of age).

Vaccinations are charged (about ¥5000 to ¥17,000 per vaccination) when you are no longer the eligible age.

Note: If you did not receive the vaccination specified by the government within the set time period and you received the vaccination at your own expense, you may be eligible for a subsidy of about half the cost. For more information, please contact us.

Inquiries: Maternal and Child Health Section **Tel:** 381-9034

Announcement from the Library

Since the library will be closed during the New Year's holidays, you may borrow up to 20 books and magazines for three weeks from December 12 (Sat.), and up to 8 CDs and DVDs for two weeks from December 19 (Sat.) Due to a limited capacity in the return drop-off box, please attempt to return items when the reception is open. Chuo Library and its annexes will be closed from December 28 (Mon.) through January 3, 2021 (Sun.), and will be temporarily open from 1 to 4 p.m. on January 4 (Mon.)

Inquiries: Chuo Library **Tel:** 352-4646

File Tax return at home! ID and Password Registration

A meeting will be held to assist in registering your ID/password required for electronic filing (e-Tax) of income tax returns using your personal computer or smartphone. All attendees are welcome.

Note: The filing process or consultations on tax returns are not available.

Date and time: December 15 (Tue.), 16 (Wed.), 10 a.m. to 4 p.m. **Note:** Registration will take about 5 minutes.

Location: Citizens' Hall (Urayasu City Hall 1F)

Eligibility: Individuals who wish to file their tax return via e-Tax (You may not register for your family member or any other person)

What to bring: Identification documents such as driver's license

Inquiries: Ichikawa Tax Office **Tel:** 047-335-4101

FY2021 Special measure for property tax on small and medium-sized businesses

To reduce the tax burden on small and medium-sized businesses facing severe financial difficulties due to measures taken to prevent the spread of novel coronavirus infections, the taxable standard amount for property taxes on business facilities and amortized assets owned by small and medium-sized businesses will be reduced for FY 2021, depending on the business income decrease. For details on qualification requirements and application methods, please visit the Urayasu City Website or the Small and Medium Enterprise Agency website <https://www.chusho.meti.go.jp/zaimu/zeisei/2020/200501zeisei.html>.

Inquiries: Fixed Property Tax Section **Tel:** 712-6225

Making Wreaths with Natural Materials

Date and time: December 20 (Sun.), 1 to 2 p.m.

Location: Sanbanze Environmental Observation Center

Eligibility: 10 people (resident of Urayasu City) on a first-come, first-served basis (pre-schoolers must be accompanied by a guardian)

Fee: ¥300

Application: From December 1 (Tue.) 9 a.m., come directly or call Sanbanze Environmental Observation Center (**Tel:** 711-1601),

Play Area Now Open for Children

Elementary schoolyards are now open and will be used as play areas for children on the 1st, 3rd, and 5th Saturdays of every month. Toddlers must be accompanied by a guardian.

① Open status of children's play area

Hokubu Elementary School	9 a.m. to 12 noon
Urayasu Elementary School	9 a.m. to 5 p.m.
Minami Elementary School	
Tomioka Elementary School	
Mihama Minami Elementary School	
Irifune Elementary School	
Hinode Elementary School	9 a.m. to 5 p.m.
Akemi Elementary School	



Inquiries: Sports Section **Tel:** 712-6818

or apply from their website <https://www.ces-net.jp/sanbanze/>

Inquiries: Environmental Observation Center (Environmental Preservation Section)

Let's Practice Kakizome (Japanese Calligraphy)

Date and time: December 26 (Sat.), 11 a.m. to 1 p.m., 2 to 4 p.m.

Location: Youth Activities Exchange Center (Ura La Mer)

Eligibility: 11 a.m. to 1 p.m.: 1st to 3rd-

grade elementary school students (residents of Urayasu City), 2 to 4 p.m.: 4th to 6th-grade elementary school students (residents of Urayasu City, 20 people on a first-come, first-served basis)

Detail: Practice kakizome, an assignment given as homework during winter vacation

Fee: ¥300

Application: From December 4 (Fri.) 1 p.m., come directly or call Ura La Mer (**Tel:** 316-5777)

Inquiries: Ura La Mer (Youth Services Section)

A Stroll with the Mayor

Eisushi Uchida, Mayor of Urayasu City

Feel Closer to the Sea

Urayasu is surrounded by water on three sides. Many residents have been voicing their requests to feel closer to these watersides.



In particular, the front coast of the Hinode/Akemi area, together with Sogo Park and the surrounding Green Road are expected to become an area where residents can go for a jog, walk and relax. Currently, Urayasu City is working with the prefecture to safely open the "apron section" near the seawalls.

The 2.5km coastline of Hinode/Akemi/Takasu area has been developed by the prefecture as part of the coastal environment improvement project since 1993, but due to changes in socio-economic conditions, the maintenance project was suspended after only about 700 m of the coastline in the Takasu area was completed. Thus, the construction for about 1800 m of the coastline of Hinode and Takasu area was left unfinished and the opening of the apron section had to be postponed.

However, as a result of our continued discussion with the prefecture, in 2018, adjustments were made in the direction to open up the apron section sequentially, starting from the mouth of Sakai River in Akemi area to Hinode area. Then, re-

pairment of the seawalls and installation of fall-prevention fences began.

To promote the project together with the prefecture, an agreement on facility management was made; and, in FY2020, Urayasu City constructed a new staircase to descend from Sogo Park to the apron section.

In the Urayasu City Waterline Utilization Plan formulated in 1988, it described the idea of constructing a sandy beach on the front coast; but due to the deep excavation work and high costs required, it will be difficult to accomplish all of this in a short period of time.

The city's urban infrastructure development is approaching its final stages. I believe that it is important to create an attractive space, one that will play the role of 'a new face' for our seaside town, and where our residents can feel closer to the sea

Recyclable Waste Disposal Schedule for November

Collection Area	Bottles/Cans/ PET plastic bottles	Newspapers/ Magazines
Nekozane, Kitazakae, Todaijima	Every Tue.	Every Mon.
Horie, Higashino, Fujimi, Maihama, Tekkadori 3-chome	Every Wed.	Every Sat.
Kairaku, Mihama, Irifune, Hinode, Akemi	Every Thu.	Every Mon.
Tomioka, Imagawa, Benten, Takasu, Minato, Tekkadori 1- and 2-chome, Chidori	Every Fri.	Every Sat.

* Please put out your garbage between 7 a.m. and 8 a.m. It is against the rules to put it out earlier or later than this designated time as it could become a nuisance in your neighborhood.

* Bulky items will be collected separately on request by phone. Call the Bulky Items Reception Center ☎ 305-4000. For inquiries, contact the Garbage-Free Section ☎ 712-6467.

FOREIGN RESIDENTS' ASSISTANCE DESK

Urayasu City provides consultation services concerning daily life such as medical, educational or job-related matters.

HOURS: 10 a.m. - 12 noon, 1 - 4 p.m. weekdays

LANGUAGES: English, French, Chinese, Polish, Spanish, Russian and Japanese

PHONE NUMBER & LOCATION:

☎351-1111 (ext. 14108)

Local Activities Promotion Section
(Urayasu City Hall 3F)