



Published by the City of Urayasu
1-1-1 Nekozane, Urayasu-shi,
Chiba 279-8501
☎047-351-1111
<http://www.city.urayasu.lg.jp>

City News



Population and No. of Households in Urayasu

Population: 170,852
Male: 83,385
Female: 87,467
Households: 82,551
Foreign Residents: 4,009
(As of August 31, 2020)

Reopening of Mihama Public Hall

October 7 (Wed.)

Mihama Public Hall, which has been undergoing a major renovation since September last year, will reopen on October 7 (Wed.). We are looking forward to your visit!

Renovations

- New study space and nursing room on the first floor. New wood deck in the library garden.
- Barrier-free bathrooms with western-style toilets. Multipurpose bathroom on every floor.
- Expansion of parking lot to accommodate 34 vehicles. Installment of a solar power generator, LED lighting, and individual (split) air conditioning systems.



Open House

- October 4 (Sun.), after the mayor's greeting starting from 9 a.m. (around 9:15) to 4 p.m.
- October 5 (Mon.), 9 a.m. to 4 p.m.

Review Basic Garbage Disposal Rules

Garbage is being disposed or separated improperly, causing accidents and injuries for the garbage collectors. We ask for your cooperation in disposing garbage properly, for the safety of the workers and to avoid delays in garbage pickup schedule.

Basic Rules

- ▶ **Throw out garbage between 7 to 8 a.m. on the pickup day.**
 - ▶ **Up to 5 garbage bags can be thrown out per household, at one time.**
 - ▶ **Do not use plastic buckets or opaque American garbage bins to throw out garbage. If contents inside are not visible, this will delay the pickup process.**
- Note:** To prevent crows from scattering garbage, please use a net or a transparent/translucent garbage box.

How to throw away masks etc. to prevent the spread of novel coronavirus disease

If you are living with someone infected or suspected of having contracted Covid-19 or other infectious diseases, when throwing out garbage such as masks and tissues, do not touch the garbage directly, seal the garbage bag firmly, and wash your hands after throwing the garbage away.

Accidents and injuries that occurred during garbage pickups

- | | | |
|--|---|--|
| A garbage bag containing a chemical substance ruptured when being collected, and the substance came into contact with the worker's eye, resulting in a burn. | → | Soak up excess detergent or chemicals, etc. with newspaper or cloth before disposal. |
| Bamboo skewers, toothpicks, and cutlery, etc. stabbed the limbs of the workers causing injuries. | → | Wrap anything with protruding tips or blades with a newspaper or cloth before disposal. |
| A broken glass bottle that was placed near the handle of the container caused a worker to injure his hand. | → | Wrap broken bottles with newspaper etc. and throw it out as noncombustible garbage. Also, carefully place bottles into the container so that it doesn't break. |
| A worker lifted a container without noticing a bottle that still had wine, and the wine spilled on his face and body. | → | Empty bottles, cans, and plastic bottles and rinse them before disposal. |

Causes for delays in garbage pickup schedule

- | | | |
|---|---|---|
| Garbage was scattered by crows and cats, and the clean-up after the pickup took time. | → | Use a net to keep crows away. A box type net is recommended for a household unit. |
| Garbage was too heavy for one person to lift and the bag was torn, causing a delay in pickup. | → | Put out garbage in small amounts, light enough to lift with one hand, to help the pickup process carry on smoothly. |

In addition, pickup may be delayed due to street parking, road construction, and condominiums forgetting to open their garbage room. We try our best to collect at the same time every week but depending on the amount of garbage and traffic, there may be a slight change in pickup schedule. We ask for your understanding and cooperation.

Inquiries: Garbage-Free Section **Tel:** 712-6467



FY2020 National Census

A census will be conducted nationwide with the key reference date set to October 1, 2020. This census is the most important statistical survey in the country based on the Statistics Act, covering all people and households living in Japan. The survey has been conducted every five years since the first survey in 1920, and the FY2020 survey is the 21st survey, marking the 100th anniversary since its implementation. Various statistics obtained from the national census are used as basic information to carry out administration procedures for the country, prefectures, municipalities, and are also utilized in a wide range of fields such as academics, education, and companies. This census will obtain essential data to depict the future of Japan facing a decline in population, low birthrate, and an aging population.



How to take the survey

Answer online (September 14 (Mon.) to October 7 (Wed))



When you receive the survey documents (guidebook for taking your survey online) you can easily fill out the survey using your smartphone, tablet, or computer. You can also take the survey by scanning the QR code.

Up to 9 people per household may be included in the survey. Answers are sent directly to the country and automatically error-checked, eliminating omissions in input. If you take the census online, you do not need to submit it in paper form.



English

Answer by mail (October 1 (Thu.) to October 7 (Wed.))



Regarding the paper survey form, only up to 4 people can fill out answers on the same form. If your household has more than five people, please contact the Urayasu City Census Operation Headquarters (4F meeting office).

Census survey documents are distributed from the beginning of September.

Taking into consideration the safety of our residents and census committee, as well as to prevent the spread of novel coronavirus infections, the city will be conducting a non-contact survey. In the beginning of September, an "Important Notice for FY2020 National Census" was distributed. We have been delivering the survey documents (a guidebook to help you take the survey online, a survey form, an envelope to submit your survey, etc.) from September 14, so once you receive the form, please be sure to reply.

We highly recommend that you take your survey online so that you can answer anytime, anywhere, 24 hours a day. In principle, completed survey forms will not be physically collected by the census committee.

Inquiries: Call center for Urayasu City Census Operation Headquarters **Tel:** 306-5520

FY2020 Cancellation of Group Vaccination for Rabies

In April, the group vaccination for rabies that is conducted every year was postponed, to prevent the spread of novel coronavirus disease. We have been considering the timing of execution but have decided to cancel this year's group vaccination because the situation is still risky and we must avoid the three Cs. We apologize for the inconvenience, but please let your pet to be vaccinated at your animal hospital. Vaccination fees at animal hospitals vary, so please contact the hospital for more information.

Inquiries: Environmental Health Section **Tel:** 712-6495

Partial subsidy for child influenza vaccination fees

To prevent infection and to reduce financial burdens on households raising a child, from October 1, we will subsidize part of the costs for influenza vaccinations (optional) for children.

Eligibility: Child born after April 2, 2002, with resident registration in Urayasu City (infants under 6 months of age cannot be vaccinated)

Subsidy amount: ¥2,000 per vaccination

Number of vaccination shots required: under 13 years old: 2 shots, 13 years old and older: 1 shot

What to bring: Application form (distributed by cooperating medical institutions in the city), health insurance card, child medical expenses furtherance receipt ticket (if you have one), Maternal and Child Health Handbook, and vaccination fee

Note: For more information, please refer to the Urayasu City website.

Inquiries: Maternal and Child Health Section **Tel:** 381-9051

Terakoya Otonami – Lesson for Classical Guitar

Date and time: January 25 (Mon.) 2021, 2 p.m. to 3:30 p.m. (doors open at 1:30 p.m.)

Location: J:COM Urayasu Concert Hall

Capacity: 150 people on a first-come, first-served basis

Program: Lesson on guitar type and playing method. Perform "Memories of the Alhambra" and "Forbidden Play" by Toshiyuki Kumagai (instructor at Showa University of Music), Takuya Okamoto (guitar)

Fee: ¥500 (open seating)

Application: from October 7 (Wed.) 9 a.m., come directly or call J:COM Urayasu Concert Hall (**Tel:** 382-3035). **Note:** pre-school children are not allowed to enter. For more information, please visit the J:COM Urayasu Concert Hall website <https://www.urayasu-concerthall.jp>

Inquiries: J:COM Urayasu Concert Hall (Life-long Learning Section)

Workshop for using the training rooms in Sports Park Gymnasium and Chuo Martial Arts Gymnasium

To use the training room, you must attend this workshop.

Eligibility: 15 years or older (excluding junior high school students)

Note: If the number of applicants is less than the maximum capacity, you may attend the workshop on that day. For more details, please contact us.

Inquiries: Bardral Urayasu Arena **Tel:** 355-1110, Chuo Martial Arts Gymnasium **Tel:** 380-2100 (Sports Section)

Shuttle bus fee will change from October 1

There will be a change in the fee for the shuttle bus used as transportation for the Funeral Home

Eligibility: Residents of Urayasu City who have applied to use the Funeral Home

Fee: ¥15,000 per day (¥30,000 for two consecutive days for a wake and a funeral)

Note: Funeral services are also available. For more information, please contact us.

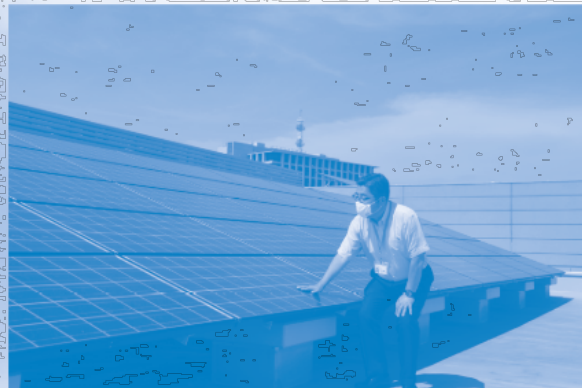
Inquiries: Funeral Home **Tel:** 316-3611

A Stroll with the Mayor

Etsushi Uchida, Mayor of Urayasu City

Announcing Zero Carbon City

I would like to ask residents to continue practicing the new lifestyle that includes "washing hands," "wearing



masks," and "ensuring physical distance of 2 m." In recent years, climate change caused by global warming has become more serious. Torrential rains and large typhoons are raging, causing major damages every year in various parts of Japan. Global warming is an issue that requires proactive action from each and every one of us, and we must devote our efforts to reduce greenhouse gas (CO₂) emissions. The city is currently developing various businesses aiming to realize a decarbonized society. As part of this effort, a solar power generation system, which is recognized as a renewable energy resource, are installed in 49 facilities including schools, and are being used to generate electricity needed within the facilities. In addition, we are promoting eco-homes that are environmentally friendly, practices to reduce waste, and increased efforts in recycling. Furthermore, in order to maintain a broad perspective and carry this initiative across regions, on July 28, we have announced to achieve a "Zero Carbon City," with the aim to realize zero greenhouse gas emissions by 2050.

house gas emissions by 2050.

Our city is located in the delta of the Kyuedo River mouth, where there are no forests or hills that absorb CO₂. Even if CO₂ emitted within the city is controlled to a minimum, it will still be difficult to reduce it to zero.

For this reason, we are adopting the "carbon offset system" and investing in environmental protection measures to compensate for the amount of emissions. We will contribute and cooperate in the conservation of forests, along with related local governments starting Kurabuchi Town, Takasaki City, Gunma Prefecture where Urayasu Citizen's Forest is located.

As inhabitants on this blue earth, in order to prevent the frequent occurrences of extreme weather and natural disasters, it is vital for us to commit ourselves to this cause immediately, and I ask all of our residents to continue cooperating to reduce greenhouse gases.

Recyclable Waste Disposal Schedule for October

Collection Area	Bottles/Cans/ PET plastic bottles	Newspapers/ Magazines
Nekozane, Kitazakae, Todaijima	Every Tue.	Every Mon.
Horie, Higashino, Fujimi, Maihama, Tekkadori 3-chome	Every Wed.	Every Sat.
Kairaku, Mihama, Irifune, Hinode, Akemi	Every Thu.	Every Mon.
Tomioka, Imagawa, Benten, Takasu, Minato, Tekkadori 1- and 2-chome, Chidori	Every Fri.	Every Sat.

* Please put out your garbage between 7 a.m. and 8 a.m. It is against the rules to put it out earlier or later than this designated time as it could become a nuisance in your neighborhood.

* Bulky items will be collected separately on request by phone. Call the Bulky Items Reception Center ☎ 305-4000. For inquiries, contact the Garbage-Free Section ☎ 712-6467.

FOREIGN RESIDENTS' ASSISTANCE DESK

Urayasu City provides consultation services concerning daily life such as medical, educational or job-related matters.

HOURS: 10 a.m. - 12 noon, 1 - 4 p.m. weekdays

LANGUAGES: English, French, Chinese, Polish, Spanish, Russian and Japanese

PHONE NUMBER & LOCATION:

☎351-1111 (ext. 14108)

Local Activities Promotion Section
(Urayasu City Hall 3F)