



Published by the City of Urayasu
1-1-1 Nekozone, Urayasu-shi,
Chiba 279-8501
☎ 047-351-1111
<https://www.city.urayasu.lg.jp>

City
News

う ら や す
U R A Y A S U

Population and No. of Households in Urayasu

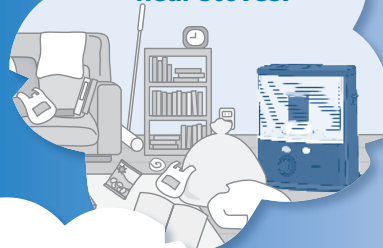
Population: 170,742
Male: 82,849
Female: 87,893
Households: 85,090
Foreign Residents: 4,704
(As of January 31, 2024)

Four Pieces of Advice

Never smoke or allow smoking in bed.



Do not leave flammable objects near stoves.



Never leave the flame on when using cooking stoves.



The Ten Keys to Protect Life in a House Fire

Clean dust from outlets and unplug unused plugs.



Spring National Fire Prevention Campaign

Fires are most common in March due to the dry air. The Spring National Fire Prevention Campaign is held from March 1 to 7 every year to promote fire prevention. During this period, fire trucks will be patrolling the streets, so when you hear the sirens, check sources of fire in your home and remember to handle fire with the utmost care.



Install a fire extinguisher and make sure you know how to use it.



Six Measures

Use stoves and cooking stoves with safety devices to prevent fires.

Inspect residential fire alarms regularly and replace them every ten years to ensure that fires are detected quickly.



Keep rooms tidy and use fire-retardant bedding, clothing and curtains to prevent fires from spreading.



Always make evacuation routes and methods available to the elderly and physically disabled.



Take community-wide fire safety measures, such as participating in fire and disaster-preparedness drills.

Residential Fire Alarm Survey Will Be Conducted

Urayasu has the highest installation rate of residential fire alarms in the prefecture*1

Urayasu City	97%
Chiba Prefecture average	79.3%
National average	84.3%

*1 Result as of June 1, 2023 (Fire and Disaster Management Agency, Ministry of Internal Affairs and Communications)

A door-to-door survey will be conducted from Tuesday, March 5 to investigate the installation rate and maintenance status of residential fire alarms.

Statistics show that installing residential fire alarms reduces the number of deaths and the amount of damage by half, as well as cutting the floor area burned by approximately sixty percent when compared to cases without fire alarms*2. Check areas in your home where fire alarms must be installed and learn inspection and replacement procedures to ensure their effective use.

*2 From data published by the Fire and Disaster Management Agency, Ministry of Internal Affairs and Communications

Areas where fire alarms must be installed

- Bedroom
- Stairwell and hallways
- Kitchen

Replacement/inspection

Fire alarms will not detect fires if there are defective components or dead batteries. Inspect them regularly and replace them after ten years.

- Inspection
 - Press the alarm button or pull the string according to the model. The alarm will start beeping.
 - If normal:** long beeps; long beeps with a voice message (such as [Fire]); voice message (such as [Normal]), etc.
 - If there are problems such as dead batteries:** short beeps; no sound, etc.
- Check
 - Check the installation date listed on the alarm.

We appreciate your cooperation.



Complete Procedures for Scrapping Mopeds and Kei Cars by Sunday, March 31!

You must submit a notification to the city office when you scrap or transfer ownership of a moped or kei car, or if it is stolen. If you do not complete this procedure on time, you will be required to pay the light motor vehicle tax by type for the following fiscal year. Make sure to complete the necessary procedures by Sunday, March 31.

The light motor vehicle tax by type is a tax imposed to those who own a moped, kei car or the like as of April 1.

If you scrap the vehicle

You must submit a notification of scrapped vehicle and return your license plate. Complete procedures at the Residential Tax Section (City Office 2F) by bringing the following. License plate, certificate of license number issuance, and personal identification such as your driver's license

If your vehicle was stolen

After reporting the theft to the police, submit a notification of scrapped vehicle to the Residential Tax Section. You will need to bring the following. Certificate of license number issuance, personal identification such as your driver's license, name of police department, date of submission and theft report receipt number

If you gift it to a friend

The license plate number that you registered will be deleted when the person who was gifted the vehicle completes ownership change procedures at the municipality administering their address. If this procedure is not completed on time or if information was missing, taxation may be imposed on the former owner. Check with each municipal office for the necessary documents.

Inquiries: Residential Tax Section, Tel: 712-6214

Procedures for vehicles with regular Narashino license plate numbers and Narashino 1XX license plate numbers

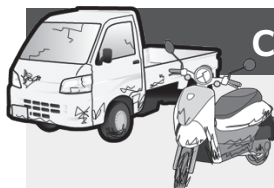
You cannot complete procedures for scrapping or transferring ownership of a kei car or motorcycle with a regular Narashino license plate number or Narashino 1XX license plate number at the City Office. Submit the "Light Motor Vehicle Tax by Type Declaration Report" or other document that is issued after completing procedures at the following offices, either in person or by mail to the Residential Tax Section, Urayasu City Hall (postal code 279-8501). For more information, contact the respective offices.

Procedures for scrapping or changing ownership of small two-wheeled vehicles and light two-wheeled vehicles

Narashino Motor Vehicle Inspection and Registration Office (Narashinodai, Funabashi City), Tel: 050-5540-2024

Procedures for scrapping or changing ownership of three- or four-wheeled light motor vehicles

Narashino Branch, Chiba Office, Light Motor Vehicle Inspection Organization (Midorigaoka Nishi, Yachiyo City), Tel: 050-3816-3115



Community Bus Schedule Will Be Revised from March 30



Due to a shortage of bus drivers, it is difficult to maintain the current bus schedule. Therefore, the Osanpo Bus service will tentatively be reduced as follows starting Saturday, March 30. Official schedules will be announced as soon as they are finalized.

Iryo Center Line

Number of services	80 per day → 44 per day
Interval	1 every 20 minutes → 1 every 30 minutes
First bus time	30 to 60 minutes later
Last bus time	60 to 120 minutes earlier

Maihama Line

Number of services	80 per day → 44 per day
Interval	1 every 20 minutes → 1 every 30 minutes
First bus time	30 to 60 minutes later
Last bus time	60 to 120 minutes earlier

Junkai Line

Number of services	84 per day → 36 per day
Interval	1 every 20 minutes → 1 every 40 minutes
First bus time	30 to 60 minutes later
Last bus time	60 to 120 minutes earlier

Inquiries: City Planning Section, **Tel:** 712-6542

Collection Day for Used Kitchen Oil and Used Clothes/Rags

Date and time: March 13 (Wed.), 9 a.m. to 2 p.m.
Location: Urayasu City Hall 1F (Civic Hall)
Note: Please wash all used clothes and rags, and place the dry items in a transparent bag.
Inquiries: Garbage-Free Section, **Tel:** 712-6485

Registration for Childcare Service Room for Ill and Recovering Children "Mitsubachi Urayasu"

Children who have difficulty spending time in a group setting because they are ill or recovering from an illness can be looked after on a temporary basis at the Childcare Service Room for Ill and Recovering Children "Mitsubachi Urayasu." Advance registration is necessary. The registration procedure takes about 30 minutes and is by appointment only, so contact us for more information.
Date and time: Monday to Friday, noon to 3 p.m. (reception open until 2:30 p.m.)
Location: Juntendo University Urayasu Hospital Childcare Service Room for Ill and Recovering Children "Mitsubachi Urayasu" (2-1-1 Tomioka)
Eligibility: Children from three months old to elementary school students who live in the city or attend a city-authorized nursery school, etc.
Inquiries: Childcare Service Room for Ill and Recovering Children "Mitsubachi Urayasu," **Tel:** 382-8001



International Center Multicultural Coexistence Event

Date and time: 1 to 4 p.m., March 24 (Sun.)
Location: International Center
Inquiries: International Center
Tel: 306-5181



Presentation of Sister City Orlando

Date and time: 2 to 4 p.m., March 17 (Sun.)
Location: International Center
Applications: Apply through the UIFA website (<https://www.uifa-urayasu.jp>) by noon on Sunday, March 17.
Inquiries: Urayasu International Friendship Association, **Tel:** 381-5931 (Local Activities Promotion Section)

A Meeting with Spring: Hanami Walk 2024

Date and time: 9 a.m. to 1 p.m., March 31 (Sun.) Cancelled if it rains.
Location: About a 6-km walk along the Sakaigawa River starting at Wakashio Park
Eligibility: Those who live, work or study in Urayasu City. 100 people on a first come, first served basis.
Fees: 200 yen
Applications: Apply through the Chiba e-Application Service (<https://apply.e-tumo.jp/city-urayasu-chiba-u/>)
Note: If capacity is not exceeded, you can participate without application in advance.
Inquiries: Sports Section, **Tel:** 712-6819



Hinamatsuri (Gonin-bayashi Performance)

Date and time: 2 to 2:30 p.m., March 3 (Sun.)
Details: *Gonin-bayashi* (five musicians) performance by the Urayasu Hayashi Preservation Association
Note: Registration not required; simply come to the venue on the day of the event
Inquiries: Folk Museum, **Tel:** 305-4300

Free COVID-19 Vaccination Period to End on March 31 (Sun.)

If you would like to receive the first and second inoculations for the COVID-19 vaccine starting in the fall of 2023, make an appointment well in advance. Please note that in principle, a fee will be charged for inoculations after April 1.
Inquiries: Urayasu City Novel Coronavirus Vaccine Call Center, **Tel:** 0120-151-670

A Stroll with the Mayor

Etsushi Uchida, Mayor of Urayasu City

Aiming to Improve Firefighting Capabilities

First of all, I would like to offer my condolences to those who have lost loved ones in the Noto Peninsula earthquake that struck on New Year's Day, and extend my sympathy to all those affected by the disaster.

Starting on January 12, Urayasu City has also been dispatching staff to Suzu City in Ishikawa Prefecture at the request of the Chiba Prefecture Government to support restoration efforts, and will continue to support affected areas as needed.

Currently, Urayasu City's regular firefighting system consists of the main station and three branch offices (Horie, Imagawa, and Hinode) under the Fire Department Headquarters, with necessary vehicles and units assigned to each facility.

In 2023, our firefighters responded to 58 fires, up 9 from the previous year; 159 rescues, up 48 from the previous year; and dispatched 10,814 ambulances, up 587 from the previous year.

It goes without saying that a rapid response system is required to ensure the safety and security of residents.

However, there are concerns that there may be cases where our emergency crew will not be able to arrive at a scene of disaster in time under the current system.

In addition, since Urayasu has an urban resort zone, it is necessary to establish a system that takes into consideration not only residents of the city but also visitors to the city.

To solve these issues, we are establishing a new branch office in the area south of the Miakagawa River. By establishing a new branch office in the Maihama area, there will be at least one firefighting facility within a 1.5-km radius. It will also even out the imbalance in the firefighting force, and shorten the average arrival time to the Maihama area by 2.6 minutes for fire trucks and 2.7 minutes for ambulances.

In addition, in response to the higher percentage of hospital transfers during the daytime, we will add one new EMS team, which will start operating in April. As a result, the new system will consist of seven teams



during the daytime and six teams at night.

Other measures that are currently progressing include the gradual upgrade of vehicles and equipment to respond to increasingly diverse and complex disasters and accidents, and discussions to rebuild the Imagawa Branch Office.

Protecting the lives and property of our residents is the primary objective of our administrative management, and to this end, we will properly analyze the current situation and promote effective measures.

Recyclable Waste Disposal Schedule

Collection Area	Bottles/Cans/PET plastic bottles	Newspapers/Magazines
Nekozane, Kitazakae, Todaijima	Every Tue.	Every Mon.
Horie, Higashino, Fujimi, Maihama, Tekkadori 3-chome	Every Wed.	Every Sat.
Kairaku, Mihama, Irifune, Hinode, Akemi	Every Thu.	Every Mon.
Tomioka, Imagawa, Benten, Takasu, Minato, Tekkadori 1- and 2-chome, Chidori	Every Fri.	Every Sat.

* Please put out your garbage between 7 a.m. and 8 a.m. It is against the rules to put it out earlier or later than this designated time as it could become a nuisance in your neighborhood.

* Bulky items will be collected separately on request by phone. Call the Bulky Items Reception Center ☎ 305-4000. For inquiries, contact the Garbage-Free Section ☎ 712-6467.

FOREIGN RESIDENTS' ASSISTANCE DESK

Urayasu City provides consultation services concerning daily life such as medical, educational or job-related matters.
HOURS: 10 a.m. - 12 noon, 1 - 4 p.m. weekdays
LANGUAGES: English, French, Chinese, Polish, Russian and Japanese
PHONE NUMBER & LOCATION: 712-6910
 Urayasu City Hall Local Activities Promotion Section

Foreign Residents Advisory Corner

Hours: Every Monday to Friday, 9 a.m. to 9 p.m., every Saturday and Sunday, 9 a.m. to 5 p.m.
Languages: English and Japanese
Phone Number & Location: 306-5181, International Center